



# Population Based Team Care

Daniel Saltman, MD  
May 6, 2018

# Learning Objectives

1. List some population-based tasks
2. Explain 2 methods of screening
3. Understand the value of standing orders and how to use them
4. Explain how an EHR system can help manage populations

# Goals of population based care

The practical goal is an improved workflow

Know a set of patients. Who is your population?

- "Panel" size: 1000, 1200, 1500, 2500
- Registries (for high value targets):
  - Based on conditions: Diabetes, HTN, Dementia
  - Based on criteria: High Utilizers
- Screening:
  - Based on demographics (age, gender, condition, criteria)
  - Based on assessment (nutritional status, strength, fall risk, mental health)

# Screening

Diabetes

HTN

Hepatitis C

TB

Chlamydia

Colon cancer

Breast cancer

# Standing orders

IF criteria met, AND

No contraindications,

THEN

Safely perform an intervention, AND

Document the intervention (update registries and criteria)

# Tdap Vaccination Protocol

## Patients

- Adults younger than 65 yrs who have not already received Tdap. Adults 65 yrs or older without a risk factor.
- Adults of any age in contact with infants younger than 12 mo (e.g. parents, grandparents, childcare providers)
- Healthcare personnel of all ages

## When

- Tdap should be given regardless of interval since previous Td.
- For people who are unvaccinated or had an incomplete primary Td series. Complete the series (spaced at 1, 1-2m, 6-12m intervals) substituting a one-time dose of Tdap for the first dose of the series.
- Give Td booster, or Tdap if Td not available, every 10 years after the primary series or booster has been completed.

# Tdap Vaccination

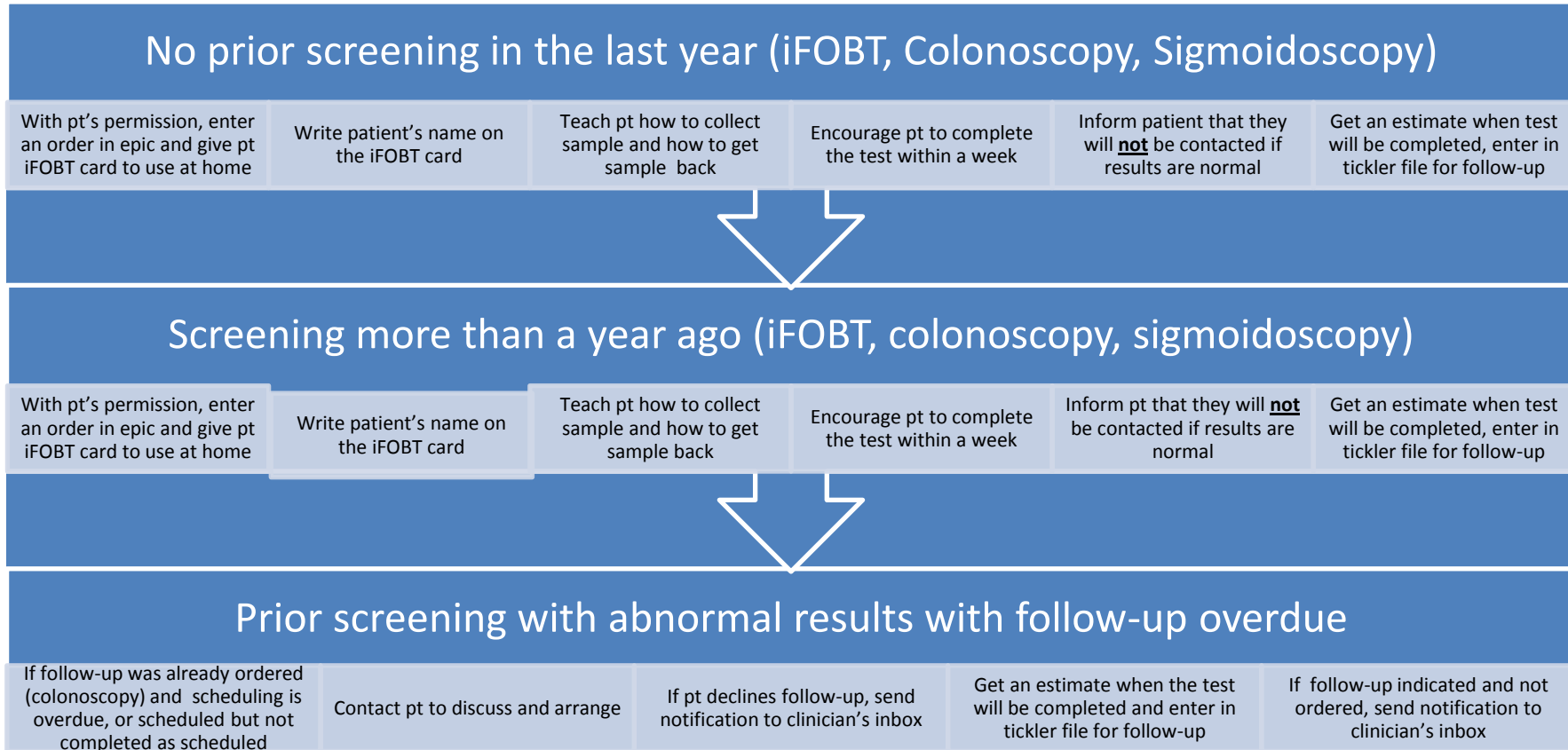
## Procedure:

- Check to see if Tdap is due and not contraindicated.
- If patient consents to be immunized
  - Give patient a "Tdap Vaccination Information Sheet"
  - Enter an order for Tdap vaccine in EPIC
  - Give the patient a Tdap vaccine and document in EPIC

## Contraindications/Risks:

- A history of serious reaction (i.e. anaphylaxis) to vaccine components is a contraindication. Tdap is contraindicated in people who have a history of encephalopathy within 7 days following DTP/DTaP given before 7 years of age. An unstable progressive neurologic problem is a precaution to the use of Tdap. For people with stable neurologic disorders (including seizures) unrelated to vaccination, or for people with a family history of seizure, vaccinate as usual. A history of Guillain-Barre Syndrome (GBS) within 6 weeks following previous dose of tetanus-toxoid-containing vaccine is a precaution; consult the clinician before administering.

## Colon Cancer Screening Protocol for Every Patient 50-75 Years Old for SCC





# Care Team Trained and Empowered to follow Protocols and Carry out Standing Orders

- 2 to 2.5 staff to 1 clinician
- co-location
- They carry out population based tasks
- They make reports, review reports, and are supported to validate data
- Providers learn to trust their work and documentation
- Providers are not responsible for individual orders for population based tasks

# What do providers do?

Diagnosis

Test ordering and interpretation

Treatments

Medications especially

Manage referrals

Education



Mahalo!

Comments and Questions?