

# DO NOT CONFUSE

## NALOXONE

Can be bought without a prescription in many states



## NALTREXONE

Cannot be bought without a prescription

# [ USES ]



### NALOXONE

- Injected into a patient suffering from an opioid overdose
- Works rapidly to take the effect of the drug away
- It's now offered as a take-home kit for Fentanyl overdose

### NALTREXONE

- Is primarily used as alcohol and drug recovery treatment
- It has been in use for over 30 years
- Injected and slowly released into the body



HAWAI'I HEALTH  
& HARM REDUCTION CENTER

The Next Chapter for Life, Community and The HOW Project

JP Moses, NUR 6020, 2016



# COMPREHENSIVE ADDICTION MANAGEMENT *USE OF MEDICATION AS A COMPONENT OF SUD THERAPY*

John Paul Moses III, MBA, MSN, RN, APRN-Rx, FNP-BC, CARN-AP

Christina M.B. Wang, DNP, MPH, APRN-Rx, AGPCNP-C

ECHO 2021

JP Moses© 2016





# HAWAI'I HEALTH & HARM REDUCTION CENTER

*The New Chapter for Life Foundation and The CHOW Project*

Reducing Harm, Promoting Health,  
Creating Wellness and Fighting Stigma  
in Hawaii and the Pacific



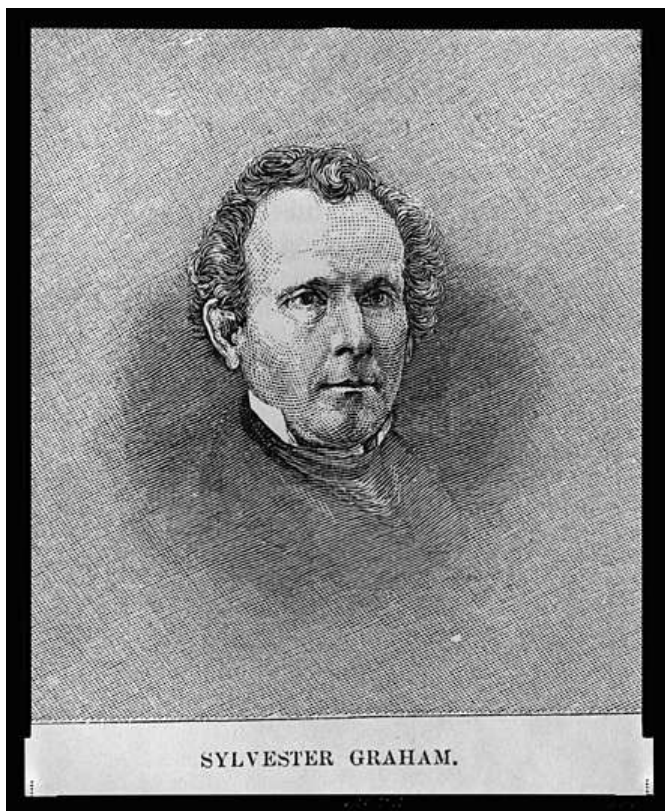
I MOSES, JP have no financial interests, arrangements, or relationships that could be perceived as a conflict of interest within the context of this presentation.

## DISCLOSURE STATEMENT





## 1820 – Philadelphia Temperance Movement



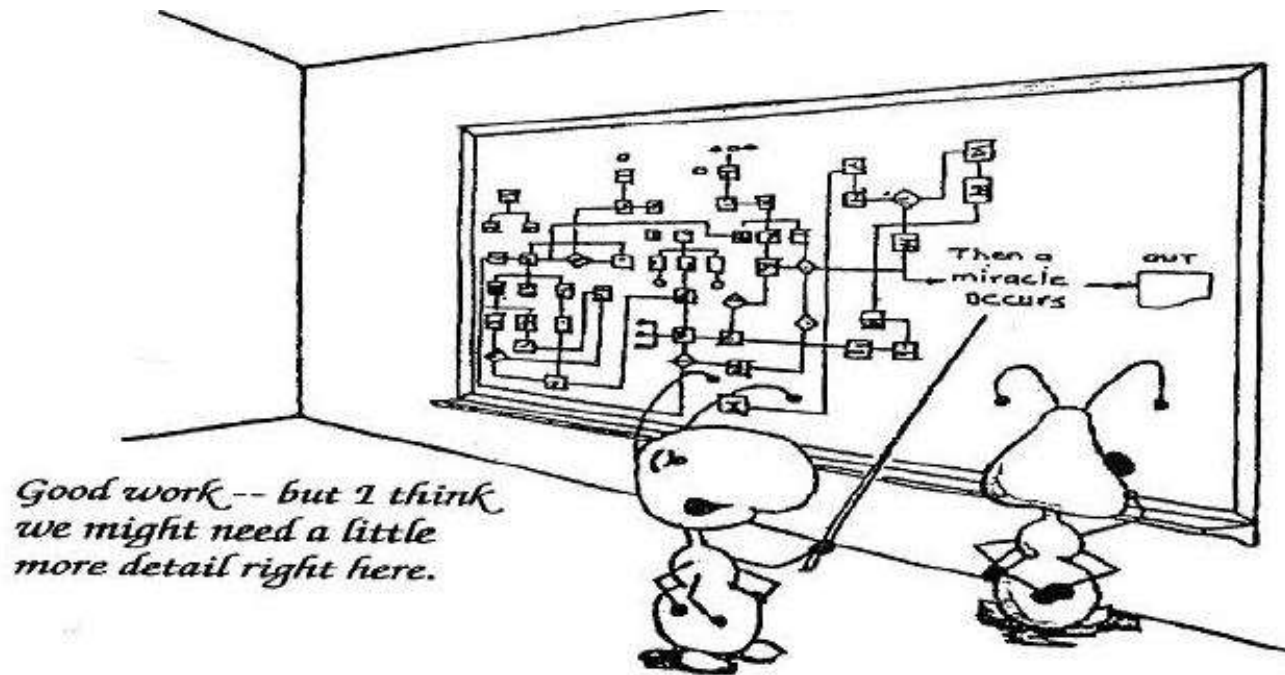
## HISTORICAL PERSPECTIVE



## DEFINITIONS

- SUD - chronic, progressive, fatal brain disease characterized by:
  - compulsive drug craving, seeking and use despite harmful consequences
  - MAT – Medication Assisted Treatment
    - AKA **TREATMENT**
  - Drug of choice – the patients’ preferred substance – hint – patients are not always honest, Use ADAD

Sources-(National Institute on Drug Abuse, 2008) (Monroe, Kenaga, Dietrich, Carter, & Cowan, 2009) (DuPont, McLellan, White, Merlo, & Gold, 2013)







## BEST PRACTICE

- Pharmacotherapies
- Professional Behavioral Therapies
- Mutual Assistance Groups/Programs

Source-(National Institute on Drug Abuse, 2019)





40 Million



18 Million



4.2 Million



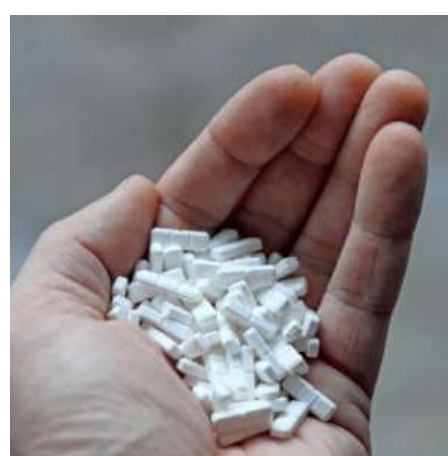
1.8 Million



1.8 Million



426,000



400,000



40 Million



18 Million



4.2 Million



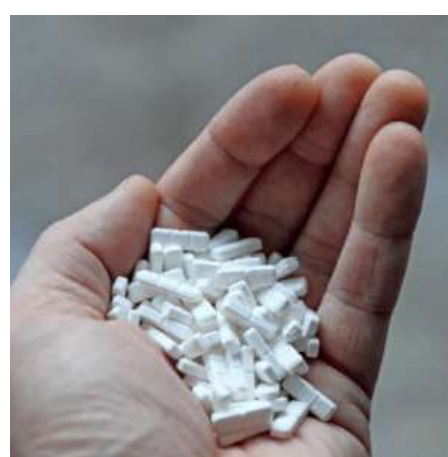
1.8 Million



1.8 Million



426,000



400,000

- Nicotine
- Alcohol
- Marijuana (THC)
- Cocaine
- Heroin
- Benzodiazepines





## FDA APPROVED PHARMACOTHERAPIES FOR SUD

- Tobacco – nicotine replacement, varenicline, buPROPion
- Alcohol – disulfiram, acamprosate, naltrexone
- Opioid – methadone, buprenorphine, naltrexone

Source-Douaihy, A. B., Kelly, T. M., & Sullivan, C. (2013). Medications for substance use disorders. *Social work in public health, 28*(3-4), 264–278.  
doi:10.1080/19371918.2013.759031




## WITHDRAWAL MEDICATION IS NOT TREATMENT

- EXAMPLES

- Use of withdrawal medications will be discussed at the end if we have time.
- Examples: chlordiazepoxide, ondansetron, folic acid, thiamine, hydroxyzine PAMOATE, Topiramate, gabapentin, alprazolam

Source-Douaihy, A. B., Kelly, T. M., & Sullivan, C. (2013). Medications for substance use disorders. *Social work in public health*, 28(3-4), 264–278.  
doi:10.1080/19371918.2013.759031



- 
- Nicotine patches/gum/lozenges
  - **Chantix** (varenicline)-nicotine antagonist
    - high affinity and high selectivity for binding at the  $\alpha 4\beta 2$  receptor
  - **Zyban (bupropion)**- NDRI
    - MOA unclear in tobacco cessation

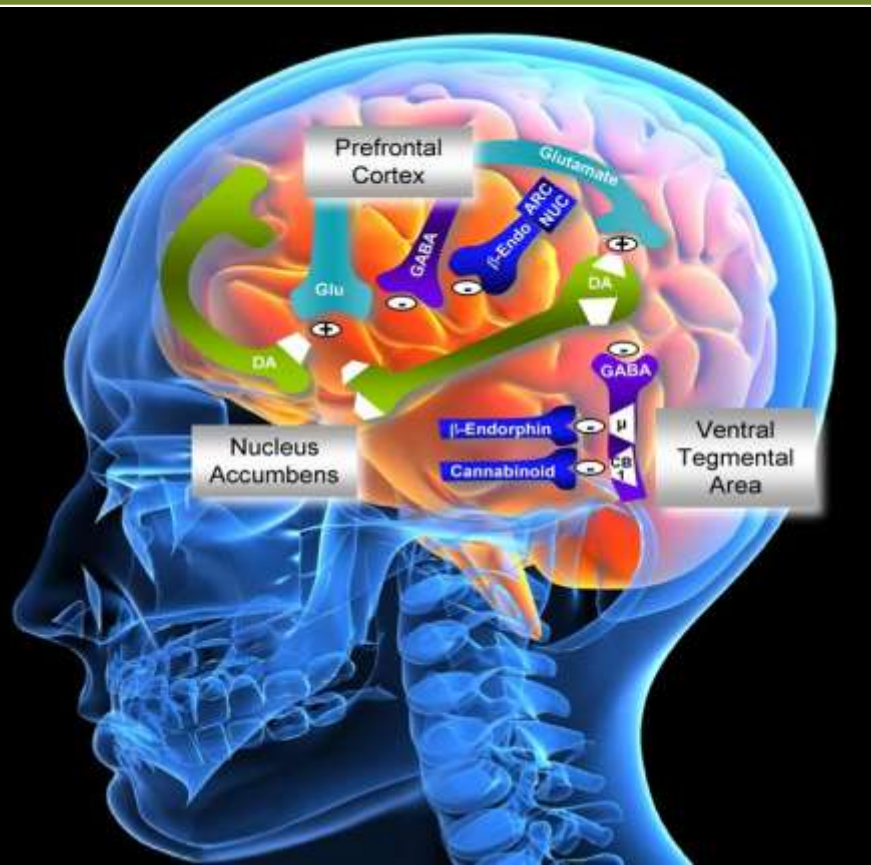
## PHARMACOLOGICAL ASSISTANCE - TOBACCO

- Vivitrol® (injectable **naltrexone**)
  - 30 day IM injection (compliance)
- Revia® (oral **naltrexone**)
  - Mu-opioid receptor antagonist
- Campral® (**acamprosate**)
  - Possible GABA receptor agonist
- Antabuse® (**disulfiram**)
  - Blocks acetaldehyde dehydrogenase

## PHARMACOLOGICAL ASSISTANCE - ALCOHOL

- Vivitrol® (injectable **naltrexone**)
  - 30 day IM injection (compliance)
- Suboxone® (buprenorphine and naloxone)
  - Mu and kappa opioid receptor modulators
  - Partial agonist
  - Used for pain control also
- Methadone
  - Mu receptor agonist – no “ceiling effect”
  - Kappa receptor agonist too – start bowel plan EARLY

## PHARMACOLOGICAL ASSISTANCE - OPIOIDS



## System Structure

Sources- (Abuse., 2008; McClure & Bickel, 2014; National Institute on Drug Abuse (NIDA), 2015)





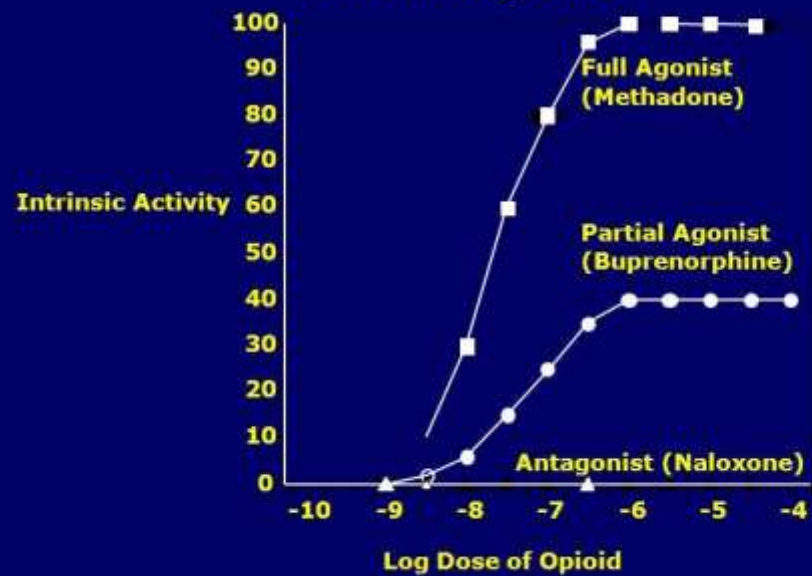
*Opiate* (n)  
“An unlocked  
door in the  
prison  
of identity.  
It leads to  
the  
jail yard.”

OPIOI  
DS  
Ambrose Bierce  
*The Devil's Dictionary* (1906)





## Intrinsic Activity: Full Agonist, Partial Agonist and Antagonist





## NALOXONE

Can be bought without a prescription in many states



## NALTREXONE

Cannot be bought without a prescription

# [ USES ]



### NALOXONE

- Injected into a patient suffering from an opioid overdose
- Works rapidly to take the effect of the drug away
- It's now offered as a take-home kit for Fentanyl overdose

### NALTREXONE

- Is primarily used as alcohol and drug recovery treatment
- It has been in use for over 30 years
- Injected and slowly released into the body

**DO NOT CONFUSE**

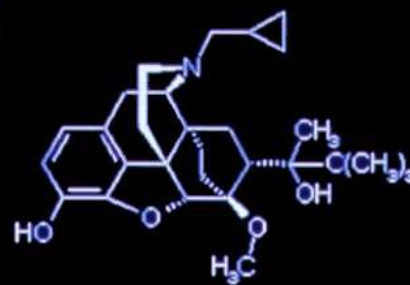
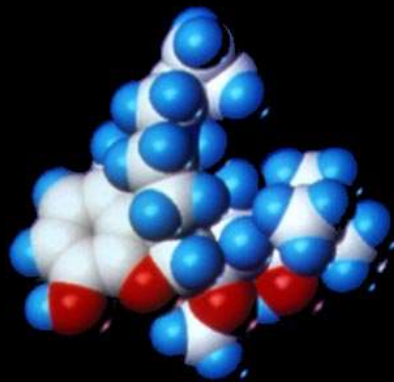


HAWAI'I HEALTH  
& HARM REDUCTION CENTER

The New Center for Life Experiences and The HOW Project  
JP Moses, NUR 6020, 2016



## BUPRENORPHINE







<b>Formulation</b>	<b>Route</b>	<b>Indication</b>
<b>Buprenorphine + naloxone</b>		
Suboxone	Sublingual film	Opioid use disorder
Zubsolv	Sublingual tablet	Opioid use disorder
Bunavail	Buccal film	Opioid use disorder
<b>Buprenorphine</b>		
Subutex	Sublingual tablet	Opioid use disorder
Belbuca	Buccal film	Pain management
Buprenex	Intravenous	Pain management
Butrans	Transdermal patch	Pain management
Probuphine	30-day subcutaneous implant	Opioid use disorder

FORMUL

ATIONS

HAWAII HEALTH  
& HARM REDUCTION CENTER

*The New Chapter for Life Foundation and The CHOW Project*





SUBOXONE® (buprenorphine and naloxone) Sublingual Film (CII) comes in a range of dose strengths\*

2 mg / 0.5 mg	
4 mg / 1 mg	
8 mg / 2 mg	
12 mg / 3 mg	



**Company:** Reckitt Benckiser

**Approval Status:** Approved October 2002

**Specific Treatments:** Opiate Dependence

Off Patent: 2018

# SUBOXONE® - BUPRENORPHINE/NALOXO NE

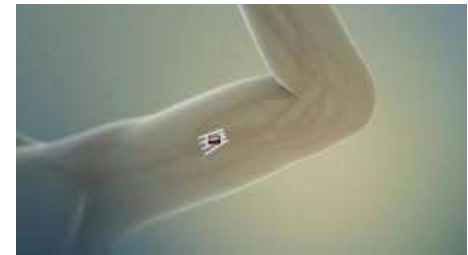


**Sublocade™**  
(buprenorphine extended-release)  
injection for subcutaneous use®  
100mg-300mg

**Probuphine®**  
(buprenorphine) implant



300 mg monthly for the first 2 months following induction and dose adjustment with transmucosal buprenorphine



# SUBLOCADE® & PROBUPHINE



HAWAI'I HEALTH  
& HARM REDUCTION CENTER  
*The New Chapter for Life Foundation and The CHOW Project*



MOA



HAWAI'I HEALTH  
& HARM REDUCTION CENTER  
*The New Chapter for Life Foundation and The CHOW Project*





- Measure withdrawal, several scales available such as:
  - Clinical Opioid Withdrawal Scale (COWS 12–16 is mild/moderate and appears sufficient to avoid precipitated withdrawal)
- Hours of abstinence since last full mu opioid use
- 12-16 short-acting, 17-24 intermediate-acting, 30-48 methadone
- BUP dose: 2 – 4mg initial, 16mg max day #1
- Monitor: 1+ hours
- Follow-up: phone + visit in 3 – 4 days

# INDUCT



# MAINTENANCE

- Treatment contract
- Sole provider for Scheduled medications
- Staged interval increasing
- Random UDS with mass spectrometry confirmation
- Dose range usually 8mg to 24 mg per day
- Consider long term therapy benefit



# TAPERING

- Shared decision-making
- Support systems in place
- Criteria for returning to previous dose
- Consider other psychoactive medications to treat comorbidities as they appear
- What is desired outcome (abstinence v harm reduction)

## THE SYSTEMS VIEW



Figure 8.1 An Example of Poor Design



HAWAI'I HEALTH  
& HARM REDUCTION CENTER

JP Moses, NJR 6020, 2016  
The CHOW Project for the CHOW Project and The CHOW Project





# ANCILLARY MEDICATIONS----- PLEASE!



HAWAII HEALTH  
& HARM REDUCTION CENTER  
*The New Chapter for Life Foundation and The CHOW Project*



## Chlordiazepoxide – Detox BZO

Librium (chlordiazepoxide HCl) has antianxiety, sedative, appetite-stimulating and weak analgesic actions. The precise mechanism of action is not known. The drug blocks EEG arousal from stimulation of the brain stem reticular formation, **RESULTING IN DECREASED SEIZURE RISK.**

SHORT TERM USE ONLY – DANGER OF USE WITH ALCOHOL

Drowsiness, dizziness, nausea, constipation, blurred vision, or headache may occur

May use fixed, symptom triggered, or tapering dosage.

# ANCILLARY MEDICATIONS



## Ondansetron – antiemetic

- MOA - serotonin (5-HT<sub>3</sub>) receptor antagonist, which decreases vagal stimulation
- First line antiemetic for most withdrawal syndromes
- Adverse effects
  - QT prolongation
  - serotonin syndrome
  - headache
  - constipation

# ANCILLARY MEDICATIONS



## Folic Acid - Vitamin

**Folic acid** supplementation has been postulated to be a therapeutic option for correcting hyperhomocysteinemia and therefore for reducing the risk of seizures in patients undergoing **alcohol withdrawal**.

An important mechanism in alcohol-induced injury is biomolecular oxidative damage. Folic acid is supplied to chronic alcoholic patients in order to prevent this situation, as this is the main vitamin deficiency that they suffer from. The decreased concentration of serum folic acid may occur in 80% of alcoholics.

# ANCILLARY MEDICATION







## Thiamine - Vitamin

Routine use of thiamine is recommended because the development of Wernicke encephalopathy or Wernicke-Korsakoff syndrome is disastrous in these patients and can remain unrecognized.

Role in axonal conduction, particularly in acetyl cholinergic and serotonergic neurons. A reduction in the function of these enzymes leads to diffuse impairment in the metabolism of glucose in key regions of the brain, resulting in impaired cellular energy metabolism.

Rare ADR

Dosage: 100 mg tab, 1 tab po qd

Thiamine has no effect on the symptoms or signs of alcohol withdrawal or on the incidence of seizures or DTs.

# ANCILLARY MEDICATIONS



## Hydroxyzine Pamoate (Not HCL) - Antihistamine

MOA for anxiety - competes with histamine for binding at H1-receptor sites on the effector cell surface. The sedative properties of hydroxyzine occur as a result of suppression of certain subcortical regions of the brain. Secondary to its central anticholinergic actions, hydroxyzine may be effective as an antiemetic

ADR/SE - Dry mouth (pilocarpine?)

- Drowsiness (usually transitory, improves with tolerance)
- Involuntary motor activity (tremor, convulsions) usually with doses considerably higher than those recommended
- Clinically significant respiratory depression has not been reported at recommended doses

# ANCILLARY MEDICATIONS



## Topiramate – Anti-seizure

### WITHDRAWAL and MOOD MANAGEMENT – OFF LABEL!

1. Blocks voltage-dependent sodium and calcium channels.
2. Inhibits the excitatory glutamate pathway while enhancing the inhibitory effect of GABA.
3. Moreover, it inhibits carbonic anhydrase activity. (The relevant mechanism of action responsible for efficient migraine prophylaxis remains to be determine)

Tiredness, drowsiness, dizziness, loss of coordination, tingling of the hands/feet, loss of appetite, bad taste in your mouth, diarrhea, and weight loss may occur

MANY CURRENT RESEARCH STUDIES ON OTHER USES FOR THIS MEDICATION. IT IS ALREADY SHOWING PROMISE IN WEIGHT LOSS, ALCOHOL/OPIOID/BENZO WITHDRWAL AND MOOD DISORDERS

# ANCILLARY MEDICATIONS



HAWAI'I HEALTH  
& HARM REDUCTION CENTER  
*The New Chapter for Life Foundation and The CHOW Project*



## Topiramate – Anti-seizure

### WITHDRAWAL and MOOD MANAGEMENT – OFF LABEL!

- Alprazolam is successful in reducing anxiety but has a high addictive/misuse potential.
- Topiramate is a novel anticonvulsant which has been used as a mood stabilizer.
- Other anticonvulsants, such as carbamazepine and valproate, have been used in alcohol and benzodiazepine withdrawal.
- Topiramate has recently been used in alcohol, cocaine and opiates withdrawal.
- There has been also one report of topiramate use in midazolam withdrawal.
- (In our case of a patient with recurrent major depressive disorder, subthreshold anxiety disorder and addiction to alprazolam, topiramate appears to be efficient and safe in alprazolam withdrawal)

# ANCILLARY MEDICATIONS







## Alprazolam - benzodiazepine

Alprazolam (Xanax) - psychoactive drugs that work to slow down the central nervous system by activating GABA receptors. This provides a variety of useful tranquilizing effects. Aside from relieving symptoms of alcohol withdrawal, benzodiazepines are also commonly prescribed to treat insomnia, muscle spasms, involuntary movement disorders, anxiety disorders, and convulsive disorders.

ADR/SE - Drowsiness, dizziness (these effects will be less pronounced after a few days, avoid driving a car or engaging in other dangerous activities if these occur); GI upset (take drug with food); fatigue; depression; dreams; crying; nervousness

Although benzodiazepines have gotten their reputation tarnished over the past 15 years, they are still useful in many cases. As with opioids, I never start a person on benzodiazepines without an exit strategy. When I have a polysubstance abuser, I generally try to address all substance recovery at the same time, including nicotine. The transition from one benzo to another using topiramate is beyond the scope of this lecture, he may see me afterwards as it is off label.

# ANCILLARY MEDICATIONS



HAWAII HEALTH  
& HARM REDUCTION CENTER  
*The New Chapter for Life Foundation and The CHOW Project*



- All FDA approved medications are to be used as PART of a comprehensive treatment program that includes and mutual support groups
- Buprenorphine and Naltrexone both show promise in multiple harm reduction studies
- Buprenorphine treatment may be initiated by any prescriber who completed special training required by the DATA 2000 (stay tuned for COVID driven changes)

## SUMMARY



HAWAII HEALTH  
& HARM REDUCTION CENTER

The New Choices for Life Foundation and The HOW Project  
JP Moses, NUR 6020, 2016



The End!



# DO NOT CONFUSE

## NALOXONE

Can be bought without a prescription in many states



## NALTREXONE

Cannot be bought without a prescription

# [ USES ]



### NALOXONE

- Injected into a patient suffering from an opioid overdose
- Works rapidly to take the effect of the drug away
- It's now offered as a take-home kit for Fentanyl overdose

### NALTREXONE

- Is primarily used as alcohol and drug recovery treatment
- It has been in use for over 30 years
- Injected and slowly released into the body



HAWAI'I HEALTH  
& HARM REDUCTION CENTER

The Next Chapter for Life, Community and The HOW Project

JP Moses, NUR 6020, 2016